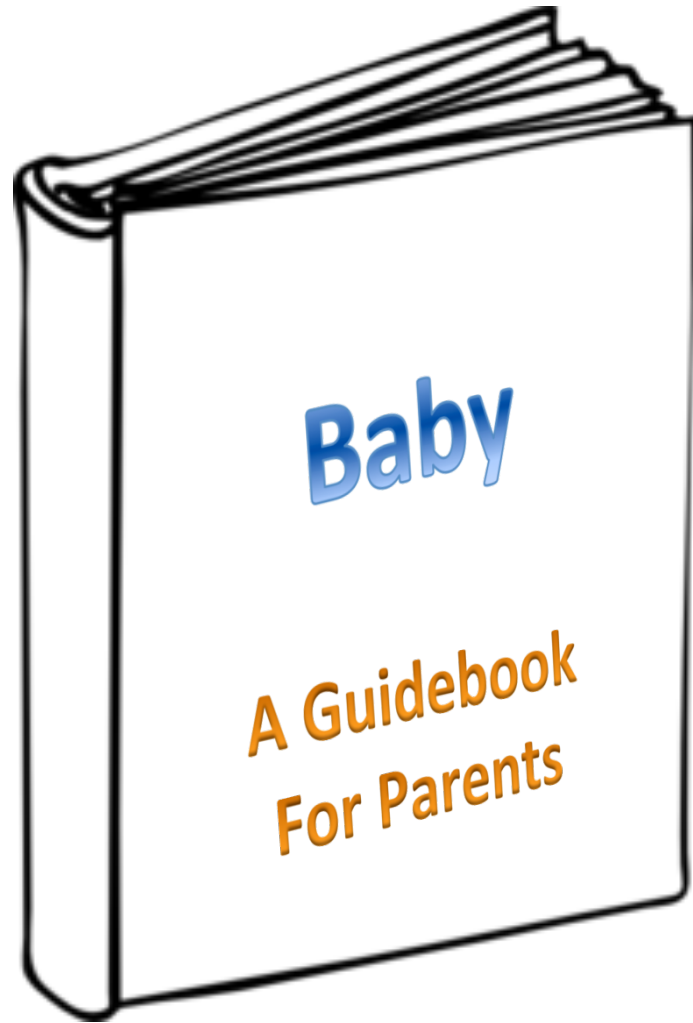




Becoming a Parent

Ross A. Thompson
University of California, Davis

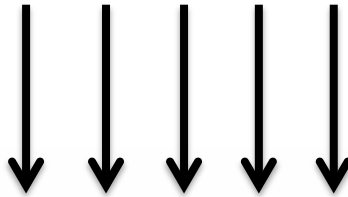




Baby

**A Guidebook
For Parents**

INPUT



OUTPUT



Intelligence



Personality



Self-concept











Is the world safe or dangerous?

Can I depend on support from those around me?

Why do people do the things they do?

How can I communicate with them?

γεια σου μωρό

สวัสดีเด็กน้อย

bonjour bébé

שלום תינוק

alo ti bebe

halo bayi

赤ちゃんこんにちは

你好宝贝

ciao bambino

alo ti bebe

Hei baby

Olá bebê

hallo Baby

cześć kochanie

Привет ребенка

hola nadó

hujambo mtoto

bebek merhaba

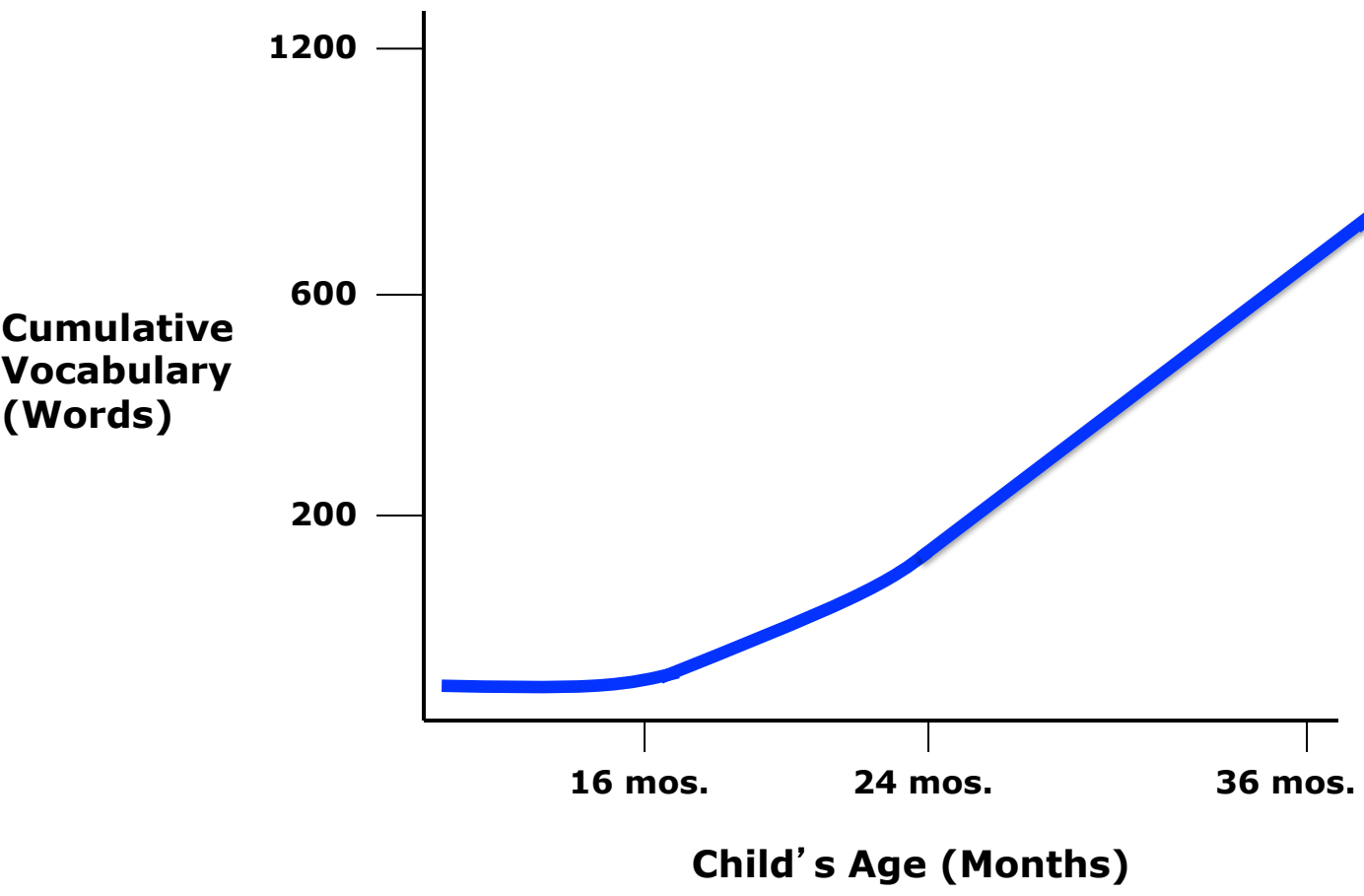
hola bebé

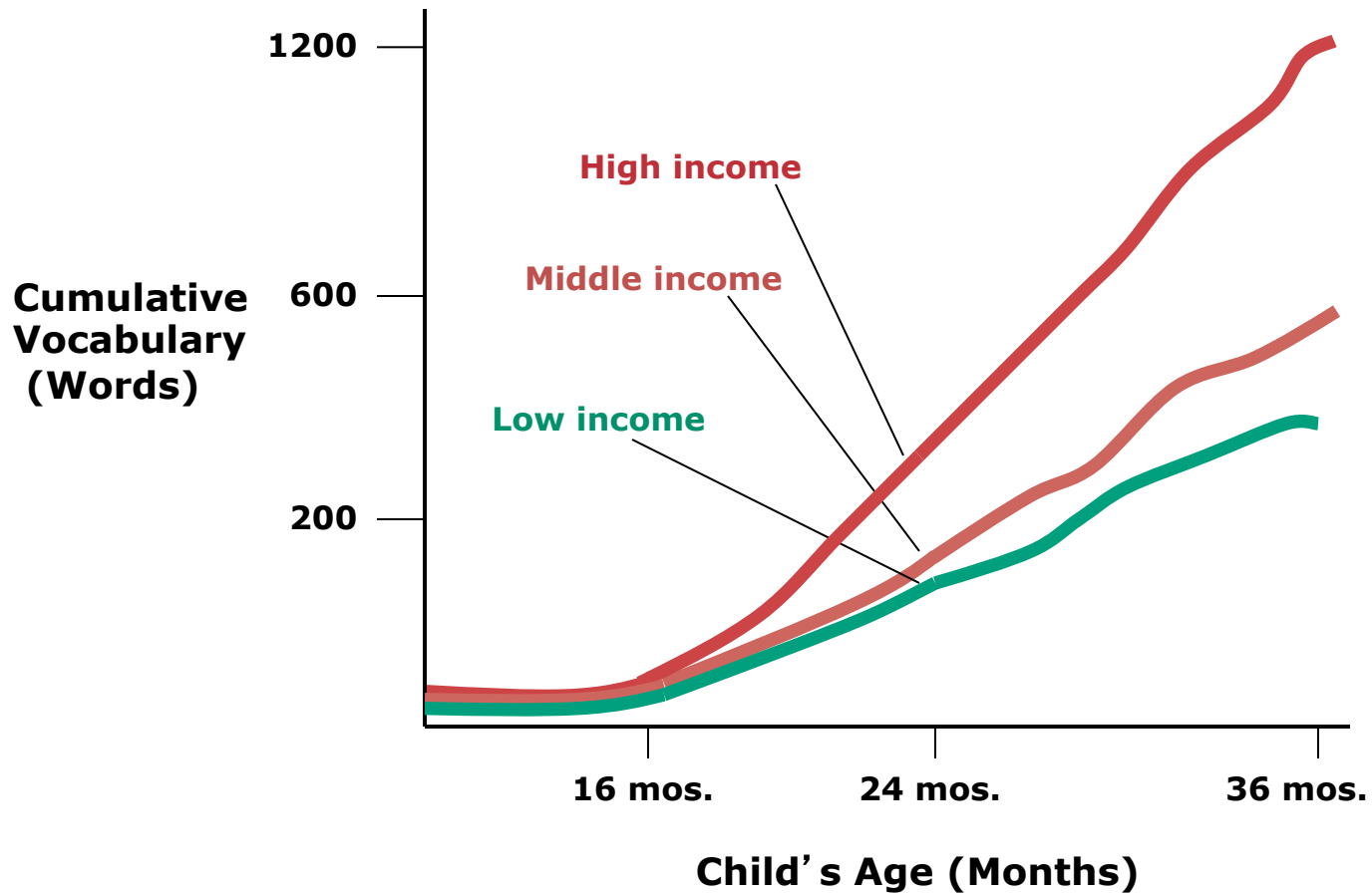
hello baby

مرحبا طفل

körpə salam

hej barn





Source: Hart & Risley (1995)

- Early experiences that are rich in language
- Language in the context of warm, responsive social interaction
- Storybook reading, conversation about the child's experiences and interests, play
- Eliciting the child's language
- Multilingual environment



You didn't like that he was bouncing your guy off the game, and that made you really mad.

It's hard when you feel so angry. You're going "AAAH, he's bouncing my guy off there!" Right?

It makes you sad thinking about it, doesn't it?

You know, after you stopped the game, the other guys said, "Joey wasn't really doing so bad." You thought you were losing, but you weren't.



Is the world safe or dangerous?









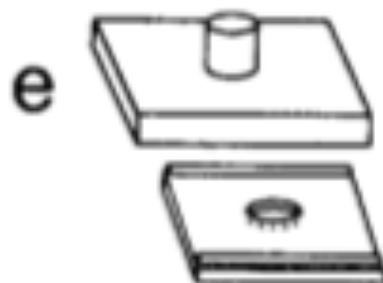
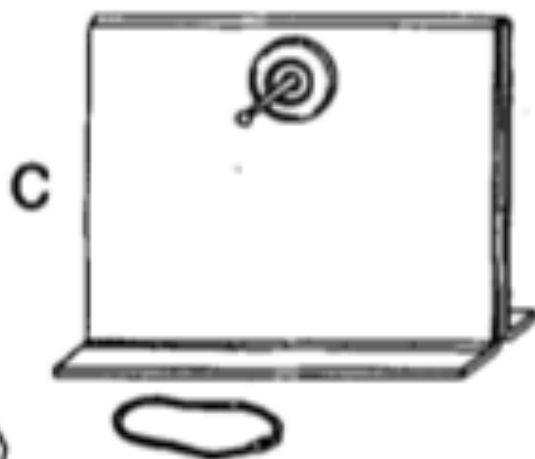
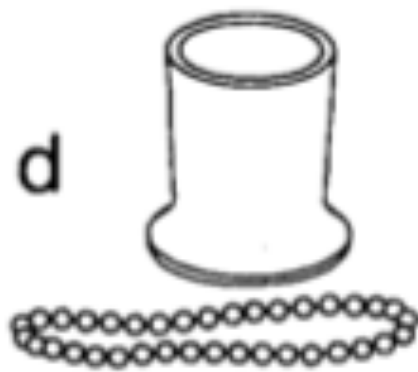


- Warm, sensitively responsive care
- Mind-mindedness
- Valuing child's unique characteristics
- Support in relieving distress
- Offering understanding
- Protection



Why do people do
the things they do?







4



00:02:27:14

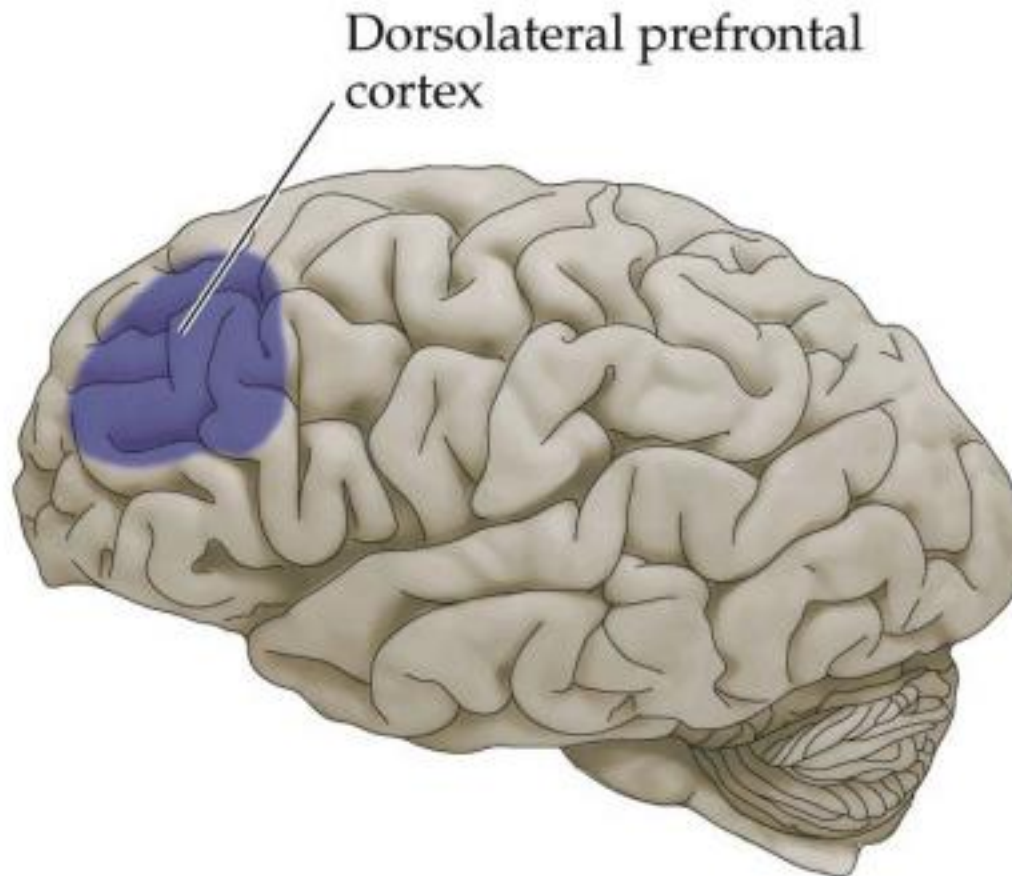


- Label and talk about mental states: intentions, feelings, goals, thoughts, expectations, beliefs
- Clarify the child's internal states and the behaviors that are associated with them
- Compare children's personalities or temperaments and the behaviors that result





Self-regulation develops very slowly in childhood and adolescence





Patient Capital



Thank
you

SEDL

THE SOCIAL AND EMOTIONAL
DEVELOPMENT LAB

UC DAVIS
UNIVERSITY OF CALIFORNIA

Ross A. Thompson
rathompson@ucdavis.edu